

**Q.1 to Q.20 carry one mark each .**

1. Consider the polynomial  $p(x) = a_0 + a_1x + a_2x^2 + a_3x^3$ , where  $a_i \neq 0, \forall i$ . The minimum number of multiplications needed to evaluate  $p$  on an input  $x$  is  
(A) 3 (C) 6  
(B) 4 (D) 9
2. Let,  $X, Y, Z$  be sets of sizes  $x, y$  and  $z$  respectively. Let  $W = X \times Y$  and  $E$  be the set of all subsets of  $W$ . The number of functions from  $Z$  to  $E$  is  
(A)  $z$  (C)  $z$   
(B)  $z \times 2^{xy}$  (D)  $2^{xyz}$
3. The set  $\{1, 2, 3, 5, 7, 8, 9\}$  under multiplication modulo 10 is not a group. Given below are four plausible reasons. Which one of them is false?  
(A) It is not closed (C) 3 does not have an inverse  
(B) 2 does not have an inverse (D) 8 does not have an inverse
4. A relation  $R$  is defined on ordered pairs of integers as follows  $(x, y) R(u, v)$  if  $x < u$  and  $y > v$ . Then  $R$  is  
(A) Neither a partial order nor an Equivalence Relation  
(B) A Partial Order but not a Total Order  
(C) A Total Order  
(D) An Equivalence Relation
5. For which one of the following reason does Internet Protocol ( IP ) use the time-to-live (TTL) field in the IP datagram header?  
(A) Ensure packets reach destination within that time  
(B) Discard packet that reach later than that time  
(C) Prevent packets from looping indefinitely  
(D) Limit the time for which a packet gets queued in intermediate routers
6. Consider three CPU- intensive processes, which require 10 , 20, and 30 time unit and arrive at times 0 ,2, and 6, respectively. How many context switches are needed if the operating system implements a shortest remaining time first scheduling algorithm? Do not count the context switches at time zero and at the end.  
(A) 1 (C) 3  
(B) 2 (D) 4

7. Consider the following grammar.

$$S \rightarrow S * E$$

$$S \rightarrow E$$

$$E \rightarrow F + E$$

$$E \rightarrow F$$

$$F \rightarrow id$$

Consider the following LR(0) items corresponding to the grammar above.

(i)  $S \rightarrow S * . E$

(ii)  $E \rightarrow F . + E$

(iii)  $E \rightarrow F + . E$

Given the items above, which two of them will appear in the same set in the canonical sets-of-items for the grammar?

(A) (i) and(ii)

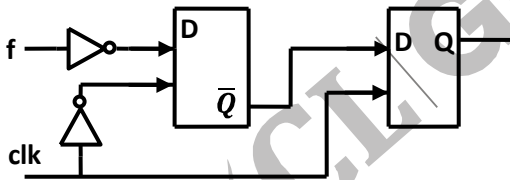
(C) (i) and (iii)

(B) (ii) and (iii)

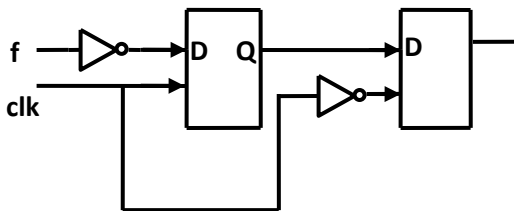
(D) None of these

8. You are given a free running clock with a duty cycle of 50% and a digital waveform  $f$  which changes only at the negative edge of the clock. Which one of the following circuits (using clocked D-flip-flops) will delay the phase of  $f$  by  $180^\circ$  ?

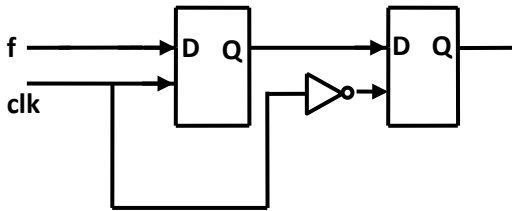
(A)



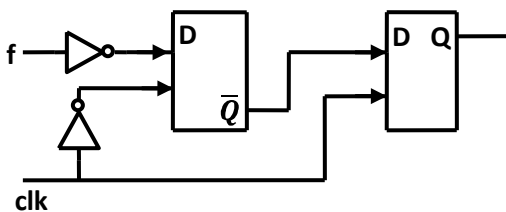
(B)



(C)



(D)



9. A CPU has 24-bit instructions. A program starts at address 300 (in decimal). Which one of the following is a legal program counter (all values in decimal)?

- (A) 400
- (B) 500
- (C) 600
- (D) 700

10. In a binary max heap containing  $n$  numbers, the smallest element can be found in time

- (A)  $\theta(n)$
- (B)  $\theta(\log n)$
- (C)  $\theta(\log \log n)$
- (D)  $\theta(1)$

11. Consider a weighted complete graph  $G$  on the vertex set  $\{v_1, v_2, \dots, v_n\}$  such that the weight of the edge  $(v_i, v_j)$  is  $2^{|i-j|}$ . The weight of a minimum spanning tree of  $G$  is

- (A)  $n - 1$
- (B)  $2n - 2$
- (C)  $\binom{n}{2}$
- (D)  $n^2$

12. To implement Dijkstra's shortest path algorithm on unweighted graphs so that it runs in linear time, then data structure to be used is

- (A) Queue
- (B) Stack
- (C) Heap
- (D) B-tree

13. A scheme of storing binary trees in an array  $X$  is as follows. Indexing of  $X$  starts at 1 instead of 0. The roots are stored at  $X[1]$ . For a node stored at  $X[i]$ , the left child, if any, is stored in  $X[2i]$  and the right child, if any in  $X[2i + 1]$ . To be able to store any binary tree on  $n$  vertices, the minimum size of  $X$  should be
- (A)  $\log_2 n$  (C)  $2n + 1$   
(B)  $n$  (D)  $2^n - 1$
14. Which one the following in place sorting algorithms needs the minimum number of swaps?
- (A) Quick-sort (C) Selection sort  
(B) Insertion sort (D) Heap sort
15. Consider the following C-program fragment in which  $i, j$  and  $n$  are integer variables.  
for ( $i = n, j = 0; i > 0; i /= 2, j += i$ );  
Let  $\text{Val}(j)$  = denote the value stored in the variable  $j$  after termination of the for loop.  
Which one of the following is true?
- (A)  $\text{val}(j) = \theta(\log n)$   
(B)  $\text{val}(j) = \theta(\sqrt{n})$   
(C)  $\text{val}(j) = \theta(n)$   
(D)  $\text{val}(j) = \theta(n \log n)$
16. Let  $S$  be an NP –complete problem  $Q$  and  $R$  be two other problems not known to be in NP.  $Q$  is polynomial-time reducible to  $S$  and  $S$  is polynomial-time reducible to  $R$ . Which one of the following statements is true?
- (A)  $R$  is NP-complete (C)  $Q$  is NP-complete  
(B)  $R$  is NP-hard (D)  $Q$  is NP-hard
17. An element in an array  $X$  is called a leader if it is greater than all elements to the right of it in  $X$ . The best algorithm to find all leaders in an array.
- (A) Solves it in linear time using a left to right pass of the array  
(B) Solves it in linear time using a right to left pass of the array  
(C) Solves it using divide and conquer in time  $\theta(n \log n)$   
(D) Solves it in time  $\theta(n^2)$
18. We are given a set  $X = \{x_1, \dots, \dots, x_n\}$  where  $x_i = 2^i$ . A sample  $S \subseteq X$  is drawn by selecting each  $x_i$  independently with probability  $p_i = \frac{1}{2}$ . The expected value of the smallest number in sample  $S$  is
- (A)  $\frac{1}{n}$   
(B) 2

- (C)  $\sqrt{n}$   
 (D)  $n$

19. Let  $L_1 = [0^{n+m} 1^n 0^m | n, m \geq 0]$ ,  $L_2 = \{0^{n+m} 1^{n+m} 0^m | n, m \geq 0\}$ , and  $L_3 = \{0^{n+m} 1^{n+m} 0^{n+m} 1^n | n, m \geq 0\}$ : Which of these languages are NOT context free? ?
- (A)  $L_1$  only (C)  $L_1$  and  $L_2$   
 (B)  $L_3$  only (D)  $L_2$  and  $L_3$

20. Consider the following log sequence of two transactions on a bank account, with initial balance 12000, that transfer 2000 to a mortgage payment and, then apply a 5% interest.

1. T1 start
2. T1 B old= 12000 new=10000
3. T1 M old = 0 new = 2000
4. T1 commit
5. T2 start
6. T2 B old=10000 new = 10500
7. T2 commit

Suppose the database system crashed just before log record 7 is written. When the system is restarted, which one statement is true of the recovery procedure?

- (A) We must redo log record 6 to set B to 10500  
 (B) We must undo log record 6 to set B to 10000 and then redo log records 2 and 3  
 (C) We need not redo log records 2 and 3 because transaction T1 has committed  
 (D) We can apply redo and undo operations in arbitrary order because they are idempotent

**Q.21 to Q.75 carry two marks each.**

21. For each element in a set of size  $2n$ , an unbiased coin is tossed. The  $2n$  coins tosses are independent. An element is chosen if the corresponding coin toss were head. The probability that exactly  $n$  elements are chosen is

- (A)  $\frac{\binom{2n}{n}}{4^n}$  (C)  $\frac{1}{\binom{2n}{n}}$   
 (B)  $\frac{\binom{2n}{n}}{2^n}$  (D)  $\frac{1}{2}$

22. Let E, F and G be finite sets.

Let  $X = (E \cap F) - (F \cap G)$  and  $Y = (E - (E \cap G)) - (E - F)$  Which one of the following is true?

- (A)  $X \subset Y$
- (B)  $X \supset Y$
- (C)  $X = Y$
- (D)  $X - Y \neq \emptyset$  and  $Y - X = \emptyset$

23. F is an  $n \times n$  real matrix. b is an  $n \times 1$  real vector. Suppose there are two  $n \times 1$  vectors, u and v such that  $u \neq v$ , and  $Fu = b, Fv = b$ . Which one of the following statement is false?

- (A) Determinant of F is zero
- (B) There are an infinite number of solutions to  $Fx = b$
- (C) There is an  $x \neq 0$  such that  $Fx = 0$
- (D) F must have two identical rows

24. Given a set of elements  $N = \{1, 2, \dots, n\}$  and two arbitrary subsets  $A \subseteq N$  and  $B \subseteq N$ , how many of the  $n!$  permutations  $\pi$  from N to N satisfy  $\min(\pi(A)) \neq \min(\pi(B))$ , where  $\min(S)$  is the smallest integer in the set of integers S, and  $\pi(S)$  is the set of integers obtained by applying permutation  $\pi$  to each element of S?

- (A)  $(n - |A \cup B|) |A| |B|$
- (B)  $(|A|^2 + |B|^2) n^2$
- (C)  $n! \frac{|A \cap B|}{|A \cup B|}$
- (D)  $\frac{|A \cap B|^2}{\binom{n}{|A \cup B|}}$

25. Let  $S = \{1, 2, 3, \dots, m\}$   $m > 3$ . Let  $X_1, \dots, X_n$  be subsets of S each of size 3 Define a function f from S to the set of natural numbers as, f(i) is the number of sets  $X_i$  that contains the element i. That is if  $f(i) = |\{j | i \in X_j\}|$  Then  $\sum_{i=1}^m f(i)$  is

- (A)  $3m$
- (B)  $3n$
- (C)  $2m + 1$
- (D)  $2n + 1$

26. Which one of the first order predicate calculus statements given below correctly expressed the following English statement ?

Tigers and Lions if they are hungry or threatened.

- (A)  $\forall x [ ( \text{tiger}(x) \wedge \text{lion}(x) ) \rightarrow \{ ( \text{hungry}(x) \vee \text{threatened}(x) ) \rightarrow \text{attacks}(x) \} ]$
- (B)  $\forall x [ ( \text{tiger}(x) \vee \text{lion}(x) ) \rightarrow \{ ( \text{hungry}(x) \vee \text{threatened}(x) ) \wedge \text{attacks}(x) \} ]$
- (C)  $\forall x [ ( \text{tiger}(x) \vee \text{lion}(x) ) \rightarrow \{ ( \text{attack}(x) \rightarrow \text{hungry}(x) ) \vee \text{threatened}(x) \} ]$
- (D)  $\forall x [ ( \text{tiger}(x) \vee \text{lion}(x) ) \rightarrow \{ ( \text{hungry}(x) \vee \text{threatened}(x) ) \rightarrow \text{attacks}(x) \} ]$

27. Consider the following propositional statements:

$$P1: ((A \wedge B) \rightarrow C) \equiv ((A \rightarrow C) \wedge (B \rightarrow C))$$

$$P2: ((A \vee B) \rightarrow C) \equiv ((A \rightarrow C) \vee (B \rightarrow C))$$

Which one of the following is true?

- (A) P1 is a tautology, but not P2.
- (B) P2 is a tautology, but not P1.
- (C) P1 and P2 are both tautologies
- (D) Both P1 and P2 are not tautologies

28. A logical binary relation  $\odot$ , is defined as follows

A	B	$A \odot B$
True	True	True
True	False	True
False	True	False
False	False	True

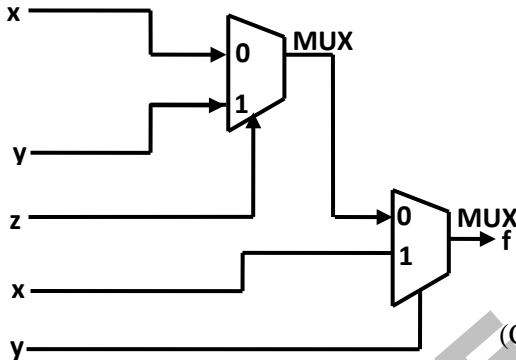
Let  $\sim$  be the unary negation (NOT) operator, with higher precedence, than  $\odot$ . Which one of the following is equivalent to  $A \wedge B$ ?

- (A)  $(\sim A \odot B)$
- (B)  $\sim (A \odot \sim B)$
- (C)  $\sim (\sim A \odot \sim B)$
- (D)  $\sim (\sim A \odot B)$

29. If  $s$  is a string over  $(0+1)^*$ , then let  $n_0(s)$  denote the number of 0's in  $s$  and  $n_1(s)$  the number of 1's in  $s$ . Which one of the following languages is not regular?
- (A)  $L = \{s \in (0+1)^* \mid n_0(s) \text{ is a 3-digit prime}\}$   
 (B)  $L = \{s \in (0+1)^* \mid \text{for every prefix } s' \text{ of } s, |n_0(s') - n_1(s')| \leq 2\}$   
 (C)  $L = \{s \in (0+1)^* \mid |n_0(s) - n_1(s)| \leq 4\}$   
 (D)  $L = \{s \in (0+1)^* \mid n_0(s) \bmod 7 = n_1(s) \bmod 5 = 0\}$
30. For  $s \in (0+1)^*$  let  $d(s)$  denote the decimal value of  $s$  (e.g.  $d(101) = 5$ ). Let  $L = \{s \in (0+1)^* \mid d(s) \bmod 5 = 2 \text{ and } d(s) \bmod 7 \neq 4\}$   
 Which one of the following statements is true?  
 (A)  $L$  is recursively enumerable, but not recursive  
 (B)  $L$  is recursive, but not context-free  
 (C)  $L$  is context-free, but not regular  
 (D)  $L$  is regular
31. Let  $\text{SHAM}_3$  be the problem of finding a Hamiltonian cycle in a graph  $G = (V, E)$  with  $|V|$  divisible by 3 and  $\text{DHAM}_3$  be the problem of determining if a Hamiltonian cycle exists in such graph. Which one of the following is true?  
 (A) Both  $\text{DHAM}_3$  and  $\text{SHAM}_3$  are NP-hard  
 (B)  $\text{SHAM}_3$  is NP-hard, but  $\text{DHAM}_3$  is not  
 (C)  $\text{DHAM}_3$  is NP-hard, but  $\text{SHAM}_3$  is not  
 (D) Neither  $\text{DHAM}_3$  nor  $\text{SHAM}_3$  is NP-hard
32. Consider the following statements about the context-free grammar,  $G = \{S \rightarrow SS, S \rightarrow ab, S \rightarrow ba, S \rightarrow \epsilon\}$   
 I.  $G$  is ambiguous  
 II.  $G$  produces all strings with equal number of a's and b's  
 III.  $G$  can be accepted by a deterministic PDA.  
 Which combination below expresses all the true statements about  $G$ ?  
 (A) I only  
 (B) I and III only  
 (C) II and III only  
 (D) I, II and III
33. Let  $L_1$  be regular language,  $L_2$  be a deterministic context-free language and  $L_3$  a recursively enumerable, but not recursive, Language. Which one of the following statements is false?  
 (A)  $L_1 \cap L_2$  is a deterministic CFL  
 (B)  $L_3 \cap L_1$  is recursive  
 (C)  $L_1 \cap L_2$  is context free  
 (D)  $L_1 \cap L_2 \cap L_3$  is recursively enumerable

34. Consider the regular language  $L = (111+11111)^*$ . The minimum number of states in any DFA accepting these languages is?
- (A) 3 (C) 8  
(B) 5 (D) 9

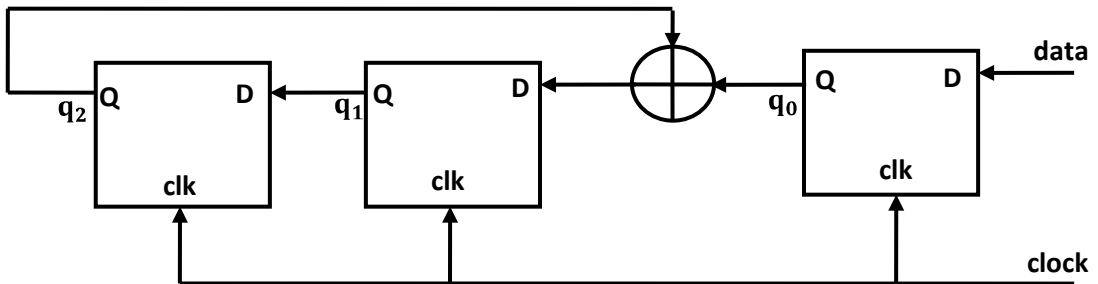
35. Consider the circuit below. which one of the following options correctly represents  $f(x,y,z)$ ?



- (A)  $x\bar{z} + xy + \bar{y}z$   
(B)  $x\bar{z} + xy + \bar{y}\bar{z}$   
(C)  $xz + xy + \bar{y}\bar{z}$   
(D)  $xz + x\bar{y} + \bar{y}z$

36. Given two three bit numbers  $a_2a_1a_0$  and  $b_2b_1b_0$  and c, the carry in, the function that represents the carry generate function when these two numbers are added is
- (A)  $a_2b_2 + a_2a_1b_1 + a_2a_1a_0b_0 + a_2a_0b_1b_0 + a_1b_2b_1 + a_1a_0b_2b_0 + a_0b_2b_1b_0$   
(B)  $a_2b_2 + a_2b_1b_0 + a_2a_1b_1b_0 + a_1a_0b_2b_1 + a_1a_0b_2 + a_1a_0b_2b_0 + a_2a_0b_1b_0$   
(C)  $a_2 + b_2 + (a_2 \oplus b_2)(a_1 + b_1 + (a_1 \oplus b_1)(a_0 + b_0))$   
(D)  $a_2b_2 + \bar{a}_2a_1b_1 + \bar{a}_2\bar{a}_1a_0b_0 + \bar{a}_2a_0\bar{b}_1b_0 + a_1\bar{b}_2b_1 + \bar{a}_1a_0\bar{b}_2b_0 + a_0\bar{b}_2\bar{b}_1b_0$

37. Consider the circuit in the diagram. The  $\oplus$  operator represents Ex-OR. The D flip-flop are initialized to zeroes (cleared).



The following data: 100110000 is supplied to the “data” terminal in nine clock cycle. After that the value of  $q_2q_1q_0$  are

- (A) 000 (C) 010  
(B) 001 (D) 101

38. Consider a boolean function  $f(w, x, y, z)$ . Suppose that exactly one of its inputs is allowed to change at a time. If the function happens to be true for two input vectors  $i_1 = \langle w_1, x_1, y_1, z_1 \rangle$  and  $i_2 = \langle w_2, x_2, y_2, z_2 \rangle$ , we would like the function to remain true as the input changes from  $i_1$  to  $i_2$  ( $i_1$  and  $i_2$  differ in exactly one bit position), without becoming false momentarily. Let  $f(w, x, y, z) = \Sigma(5, 7, 11, 12, 13, 15)$ . Which of the following cube covers of  $f$  will ensure that the required property is satisfied?

- (A)  $\bar{w} x z, w x \bar{y}, x \bar{y} z, x y z, w y z$   
(B)  $w x y, \bar{w} x z, w y z$   
(C)  $w x \bar{y} z, x z, w \bar{x} y z$   
(D)  $w z y, w y z, w x z, \bar{w} x z, x \bar{y} z, x y z$

39. We consider the addition of two 2's complement numbers

$b_{n-1} b_{n-2} \dots b_0$  and  $a_{n-1} a_{n-2} \dots a_0$ . A binary adder for adding unsigned binary numbers is used to add the two number. The sum is denoted by  $c_{n-1} c_{n-2} \dots c_0$  and the carry out by  $c_{out}$ . Which one of the following options correctly identifies the overflow condition?

- (A)  $c_{out} (\overline{a_{n-1} \oplus b_{n-1}})$   
(B)  $a_{n-1} b_{n-1} \overline{c_{n-1}} + \overline{a_{n-1}} b_{n-1} c_{n-1}$   
(C)  $c_{out} \oplus c_{n-1}$   
(D)  $a_{n-1} \oplus b_{n-1} \oplus c_{n-1}$

40. Consider numbers represented in 4-bit gray code. Let  $h_3 h_2 h_1 h_0$  be the gray code representation of a number  $n$  and let  $g_3 g_2 g_1 g_0$  be the gray code of  $(n + 1)$  (modulo 16) value of the number. Which one of the following functions is correct?

- (A)  $g_0(h_3 h_2 h_1 h_0) = \Sigma(1, 2, 3, 6, 10, 13, 14, 15)$   
(B)  $g_1(h_3 h_2 h_1 h_0) = \Sigma(4, 9, 10, 11, 12, 13, 14, 15)$   
(C)  $g_2(h_3 h_2 h_1 h_0) = \Sigma(2, 4, 5, 6, 7, 12, 13, 15)$   
(D)  $g_3(h_3 h_2 h_1 h_0) = \Sigma(0, 1, 6, 7, 10, 11, 12, 13)$

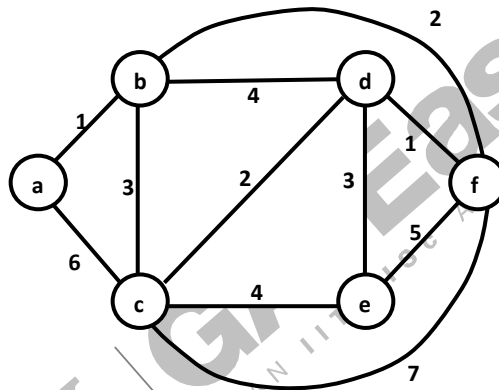
41. A CPU has a cache with block size 64 bytes. The main memory has  $k$  banks, each bank being  $c$  bytes wide. Consecutive  $c$ -byte chunks are mapped on consecutive banks with warp-around. All the  $k$  banks can be accessed in parallel, but two accesses to the same bank must be serialized. A cache block access may involve multiple iterations of parallel bank accesses depending on the amount of data obtained by accessing all the  $k$  banks in parallel. Each iteration requires decoding

- the bank numbers to be accessed in parallel and this takes  $k/2$  ns. The latency of one bank access is 80 ns. If  $c = 2$  and  $k = 24$ , then latency of retrieving a cache block starting at address zero from main memory is
- (A) 92 ns (C) 172 ns  
(B) 104 ns (D) 184 ns
42. A CPU has five-stage pipeline and runs at  $1\text{ GHz}$  frequency. Instruction fetch happens in the first stage of the pipeline. A conditional branch instruction computes the target address and evaluated the condition in the third stage of the pipeline. The processor stops fetching new instructions following a conditional branch until the branch outcome is known. A program executes  $10^9$  instructions out of which 20% are conditional branches. If each instruction takes one cycle to complete on average, then total execution time of the program is
- (A) 1.0 seconds (C) 1.4 seconds  
(B) 1.2 seconds (D) 1.6 seconds
43. Consider a new instruction named branch-on-bit-set (mnemonic `bbs`). The instruction “`bbs reg, pos, label`” jumps to label if bit in position `pos` of register operand `reg` is one. A register is 32 bits wide and the bits are numbered 0 to 31, bit in position 0 being the least significant. Consider the following emulation of this instruction on a processor that does not have `bbs` implemented.
- `temp ← reg and mask`  
Branch to label if temp is non-zero
- The variable `temp` is a temporary register. For correct emulation, the variable `mask` must be generated by
- (A) `mask ← 0 × 1 << pos`  
(B) `mask ← 0 × ffffffff >> pos`  
(C) `mask ← pos`  
(D) `mask ← 0 × f`
44. Station A uses 32 byte packets to transmit message to station B using a sliding window protocol. The round trip delay between A and B is 80 milliseconds and the bottleneck bandwidth on the path between A and B is 128 kbps. What is the optimal window size that A should use?
- (A) 20 (C) 160  
(B) 40 (D) 320
45. Two computers C1 and C2 are configured as follows. C1 has IP address 203.197.2.53 and netmask 255.255.128.0. C2 has IP address 203.197.75.201 and netmask 255.255.192.0. Which one of the following statements is true?
- (A) C1 and C2 both assume they are on the same network  
(B) C2 assumes C1 is on same network, but C1 assumes C2 is on a different network

- (C) C1 assumes C2 is on same network, but C2 assumes C1 is on a different network
- (D) C1 and C2 both assume they are on different network

46. Station A needs to send a message consisting of 9 packets to Station B using a sliding window (window size 3) and go-back-n error control strategy. All packets are ready and immediately available for transmission. If every 5<sup>th</sup> packet that A transmits gets lost (but no acks from B ever get lost), then what is the number of packets that A will transmit for sending the message to B?
- (A) 12
  - (B) 14
  - (C) 16
  - (D) 18

47. Consider the following graph:



Which one of the following cannot be the sequence of edges added, in that order to a minimum spanning tree using Kruskal's algorithm?

- (A) ( a – b), ( d – f), ( b – f), ( d – c), ( d – e)
  - (B) ( a – b), ( d – f), ( d – c), ( b – f), ( d – e)
  - (C) ( d – f), ( a – b), ( d – c), ( b – f), ( d – c)
  - (D) ( d – f), ( a – b), ( b – f), ( d – e), ( d – c)
48. Let T be a depth first search tree in a undirected graph G. Vertices u and v are leaves of this tree T. The degrees of both u and v in G are at least 2. Which one of the following statements is true?
- (A) There must exist a vertex w adjacent to both u and v in G
  - (B) There must exist a vertex w whose removal disconnects u and v in G
  - (C) There must be exist a cycle in G containing u and v
  - (D) There must exist a cycle in G containing u and all its neighbour in G

49. An implementation of a queue Q, using two stacks S1 and S2, is given below

```
void insert(Q, x) {
    push (S1,x);
}
void delete (Q) {
    if (stack-empty(S2)) then
    if (stack-empty(S1)) then {
        print ("Q is empty");
    }
    return;
}
else while(! (stack-empty)(S1))) {
    x = pop (S1);
    push (S2, x);
}
x = pop (S2);
}
```

Let n insert and m ( $\leq n$ ) delete operations be performed in an arbitrary order on an empty queue Q, Let x and y be the number of push and pop operations performed respectively in the processes. Which one of the following is true for all m and n?

- (A)  $n + m \leq x < 2n$  and  $2m \leq n + m$   
 (B)  $n + m \leq x < 2n$  and  $2m \leq y \leq 2n$   
 (C)  $2m \leq x < 2n$  and  $2m \leq y \leq n + m$   
 (D)  $2m \leq x < 2n$  and  $2m \leq y \leq 2n$

50. A set X can be represented by an array x[n] as follows

$$x[i] = \begin{cases} 1 & \text{if } i \in X \\ 0 & \text{otherwise} \end{cases}$$

Consider the following algorithm in which x, y and z are boolean arrays of size n:

```
algorithm zzz (x[], y[], z[]) {
    int i;
    for ( i =0; i < n; ++i)
        z[i] = ( x[i]  $\wedge$   $\sim$  y[i])  $\vee$  ( $\sim$ x[i]  $\wedge$  y[i])
    }
```

The set Z computed by the algorithm is

- (A)  $(X \cup Y)$  (C)  $(X - Y) \cap (Y - X)$   
 (B)  $(X \cap Y)$  (D)  $(X - Y) \cup (Y - X)$

51. Consider the following is true?

$$T(n) = 2T(\lceil \sqrt{n} \rceil) + 1, T(1) = 1$$

Which one of the following is true?

- (A)  $T(n) = \theta(\log \log n)$  (C)  $T(n) = \theta(\sqrt{n})$   
 (B)  $T(n) = \theta(\log n)$  (D)  $T(n) = \theta(n)$

52. The median of  $n$  elements can be found in  $O(n)$  time. Which one of the following is correct about the complexity of quick sort, in which median is selected as pivot?

- (A)  $\theta(n)$  (C)  $\theta(n^2)$   
 (B)  $\theta(n \log n)$  (D)  $\theta(n^3)$

53. Consider the following C-function in which  $a[n]$  and  $b[m]$  are two sorted integer arrays and  $c[n + m]$  be another integer array.

```
void xyz(int a[], int b[], int c[]) {
    int i, j, k;
    i = j = k = 0;
    while ((i < n) && (j < m))
        if (a[i] < b[j]) c[k++] = a[i++];
        else
            c[k++] = b[j++];
}
```

Which of the following condition (s) hold(s) after the termination of the while loop?

- (i).  $j < m$ ,  $k = n + j - 1$ , and  $a[n-1] < b[j]$  if  $i = n$   
 (ii).  $i < n$ ,  $k = m + i - 1$ , and  $b[m-1] < c[i]$  if  $j = m$

- (A) only (i)  
 (B) only (ii)  
 (C) either (i) or (ii) but not both  
 (D) neither (i) nor (ii)

54. Given two arrays of numbers  $a_1, \dots, a_n$  and  $b_1, \dots, b_n$  where each numbers is 0 or 1, the fastest algorithm to find the largest span  $(i, j)$ , such that  $a_i + a_{i+1} + \dots + a_j = b_i + b_{i+1} + \dots + b_j$  or report that there is no such span.

- (A) Takes  $O(3^n)$  and  $\Omega(2^n)$  time if hashing is permitted  
 (B) Takes  $O(n^3)$  and  $\Omega(n^{2.5})$  time in the key comparison mode;  
 (C) Takes  $\Theta(n)$  time and space  
 (D) Takes  $O(\sqrt{n})$  time only if the sum of the  $2n$  elements are in even number

55. Consider these two functions and two statements S1 and S2 about them.

```
int work1(int *a, int i, int j)
{
  int x = a[ i+2];
  a[j] = x + 1;
  return a [i+2] - 3; }
}
```

```
int work2(int *a, int i, int j)
{
  int t1 = i+2;
  int t2 = a[t1];
  a[j] = t2 +1;
  return t2 - 3 ;
}
```

S1: The transformation from work1 to work2 is valid, i.e. for any program state and input arguments, work2 will compute the same output and have the same effect on program state as work1

S2: All the transformations applied to work1 to get work2 will always improve the performance ( i.e. reduce CPU time) of work 2 compared to work1.

(A) S1 is false and S2 is false

(C) S1 is true and S2 is false

(B) S1 is false and S2 is true

(D) S1 is true and S2 is true

56. Consider the following code written in a pass-by-reference language like FORTRAN and these statements about the code

```
Subroutine swap (ix, iy)
  it = ix;
L1 :  ix = iy;
L2:  iy = it;
  end
  ia =3

ib = 8
call swap ( ia, ib + 5)
print*, ia, ib
end
```

S1: The compiler will generate code to allocate a temporary nameless cell, initialize it to 13, and pass the address of the cell to swap

S2: On execution the code will generate a runtime error on line L1

S3: On execution the code will generate a runtime error on line L2

S4: The program will print 13 and 8

S5: The program will print 13 and -2

Exactly the following set of statement (s) is correct:

- (A) S1 and S2 (C) S3  
 (B) S1 and S4 (D) S1 and S5

57. Consider this C code to swap two integers and these five statements : the code

```
void swap ( int *px, int*py)
{
    *px = *px - *py;
    *py = *px + *py;
    *px = *py - *px;
}
```

S1: will generate a compilation error

S2: may generate a segmentation fault at runtime depending on the arguments passed

S3: Correctly implements the swap procedure for all input pointers referring to integers stored in memory locations accessible to the process

S4: implements the swap procedure correctly for some but not all valid input pointers

S5: may add or subtract integers and pointers

- (A) S1 (C) S2 and S4  
 (B) S2 and S3 (D) S2 and S5

58. Consider the following grammar

$S \rightarrow FR$

$R \rightarrow *S \mid \epsilon$

$F \rightarrow id$

in the predictive parser table,  $M$ , of the grammar the entries  $M[S, id]$  and  $M[R, \$]$  respectively

- (A)  $\{S \rightarrow FR\}$  and  $\{R \rightarrow \epsilon\}$   
 (B)  $\{S \rightarrow FR\}$  and  $\{\}$   
 (C)  $\{S \rightarrow FR\}$  and  $\{R \rightarrow *S\}$   
 (D)  $\{F \rightarrow id\}$  and  $\{R \rightarrow \epsilon\}$

59. Consider the following translation scheme.

$S \rightarrow ER$

$R \rightarrow *E \{ \text{print}\{ '*'\}; R \mid \epsilon$

$E \rightarrow F + E \{ \text{print}\{ '+'\}; \mid F$

$F \rightarrow (S) \mid id \{ \text{print}\{ id.value\};$

Here  $id$  is a token that represents an integer and  $id.value$  represents the corresponding integer value. For an input '2 \* 3 + 4', this translation scheme prints

- (A) 2 \* 3 + 4 (C) 2 3 \* 4 +  
 (B) 2 \* + 3 4 (D) 2 3 4 + \*

60. Consider the following C code segment.

```
for(i=0; i<N; i++)
    for(j=0; j<N; j++)
        if(i%2)
            { x += (4 * j + 5 * i);
              y += (7 + 4 *j);
            }
    }
```

Which one of the following is false?

- (A) The code contains loop-in variant computation
  - (B) There is scope of common sub-expression elimination in this code
  - (C) There is scope of strength reduction in this code
  - (D) There is scope of dead code elimination in this code
61. The atomic fetch-and-set x, y instruction unconditionally sets the memory location x to 1 and fetches the old value of x in y without allowing any intervening access to the memory location x. Consider the following implementation of P and V functions on a binary semaphores S.

```
void p (binary_semaphore *S) {
    unsigned y;
    unsigned *x = & (S -> value); }
do {
    fetch – and – set x, y;
} while (y);
}
void V (binary_semaphore *S) {
{
S -> value = 0;
}
```

Which one the following is true?

- (A) The implementation may not work if context switching is disabled in P
  - (B) Instead of using fetch- and- set, a pair of normal load/ store can be used
  - (C) The implementation of V is wrong
  - (D) The code does not implement a binary semaphore
62. A CPU generates 32-bit virtual addresses. The page size is 4 KB. The processor has a translation look-aside buffer (TLB) which can hold a total of 128 page table entries and is 4-way set associative. The minimum size of the TLB tag is
- (A) 11 bits
  - (B) 13 bits
  - (C) 15 bits
  - (D) 20 bits

63. A computer system supports 32-bit virtual addresses as well as 32-bit physical addresses. Since the virtual address space is of the same size as the physical addresses space, the operating system designers decide to get rid of the virtual memory entirely. Which one of the following is true?
- (A) Effective implementation of multi-user-support is no longer possible  
 (B) The processor cache organization can be made more efficient now  
 (C) Hardware support for memory management is no longer needed  
 (D) CPU scheduling can be made more efficient now
64. Consider three processes (process id 0, 1, 2 respectively) with compute time bursts 2, 4 and 8 time units. All processes arrive at time zero. Consider the longest remaining time first (LRTF) scheduling algorithm. In LRTF ties are broken by giving priority to the process with the lowest process id. The average turn around time is
- (A) 13 units  
 (B) 14 units  
 (C) 15 units  
 (D) 16 units
65. Consider three processes all arriving at time zero, with total execution time of 10, 20, and 30 units, respectively. Each process spends the first 20% of execution time doing I/O, the next 70% of time doing computation, and the last 10% of time doing I/O again. The operating system uses a shortest remaining compute time first scheduling algorithm and schedule a new process either when the running process get blocked on I/O or when the running process finishes its compute burst. Assume that all I/O operation can be overlapped as much as possible. For what percentage of time does the CPU remain idle?
- (A) 0%  
 (B) 10.6%  
 (C) 30.0%  
 (D) 89.4%
66. Consider the following snapshot of a system running  $n$  processes. Process  $i$  is building  $x_i$  instances of a resources  $R$ , for  $1 \leq i \leq n$ . Currently all instances of  $R$  are occupied. Further, for all  $i$ , process  $i$  has placed a request for an additional  $y_i$  instances while holding the  $x_i$  instances it already has. There are exactly two processes  $p$  and  $q$  such that  $y_p = y_q = 0$ . Which one of the following can serve as a necessary condition to guarantee that the system is not approaching a deadlock?
- (A)  $\min(x_p, x_q) < \max_{k \neq p, q} y_k$   
 (B)  $x_p + x_q \geq \min_{k \neq p, q} y_k$   
 (C)  $\min(x_p, x_q) > 1$   
 (D)  $\min(x_p, x_q) > 1$

67. Consider the relation account (customer, balance) where customer is a primary key and there are no null values. We would like to rank customers according to decreasing balance. The customer with the largest balance gets rank 1. Ties are not broken but ranks are skipped: if exactly two customers have the largest balance they each get rank 1 and rank 2 is not assigned.

Query 1: select A.customer, count (B.customer) from account A, account B where A.balance <= B.balance group by A.customer

Query 2: select A.customer, 1+count (B.customer) from account A, account B where A.balance < B.balance group by A.customer

Consider these statements about Query 1 and Query 2.

1. Query 1 will produce the same row set as Query 2 for some but not all databases.
2. Both Query 1 Query 2 are correct implementations of the specification
3. Query 1 is a correct implementation of the specification but Query 2 is not
4. Neither Query 1 nor Query 2 is a correct implementation of the specification
5. Assigning rank with pure relational Query takes less time than scanning in decreasing balance order and assigning ranks using ODBC

Which two of the above statements are correct?

- |             |             |
|-------------|-------------|
| (A) 2 and 5 | (C) 1 and 4 |
| (B) 1 and 3 | (D) 3 and 5 |

68. Consider the relation enrolled (student, course) in which (student, course) is the primary key, and the relation paid (student, amount) where student is the primary key. Assume no null values and no foreign keys or integrity constraints. Given the following four queries:

Query 1: select student from enrolled where student in (select student from paid)

Query2: Select student from paid where student in (select student from enrolled)

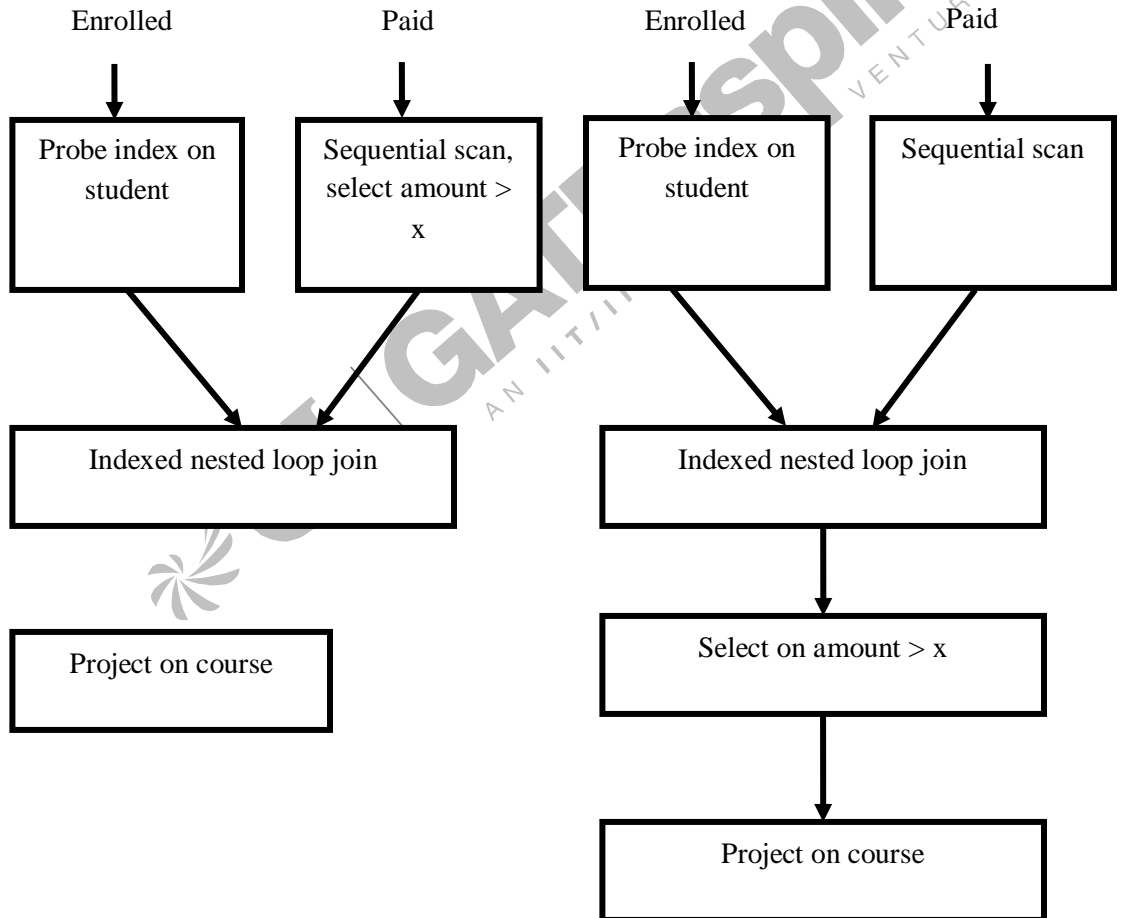
Query 3: select E.student from enrolled E, paid P where E.student = P.student

Query 4: Select student from paid where exists (select \* from enrolled where enrolled.student=paid.student)

Which one of the following statements is correct?

- (A) All queries return identical row sets for any database
- (B) Query 2 and Query 4 return identical row sets for all databases but there exist databases for which Query 1 and Query 2 return different row sets
- (C) There exist databases for which Query 3 returns strictly fewer rows than Query 2
- (D) There exist databases for which Query 4 will encounter an integrity violation at runtime.

69. Consider the relation enrolled (student, course) in which (student, course) is the primary key, and the relation paid (student, amount) where student is the primary key. Assume no null values and no foreign keys or integrity constraints. Assume that amounts 6000, 7000, 8000, 9000 and 10000 were each paid by 20% of the students. Consider these query plans (Plan 1 on left, Plan 2 on right) to “list all courses taken by students who have paid more than x.”



A disk seek takes 4ms, disk data transfer bandwidth is 300 MB/s and checking tuple to see to see if amount is greater than x takes 10  $\mu$ s. Which of the following statement is correct?

- (A) Plan 1 and Plan 2 will not output identical row sets for all databases
- (B) A course may be listed more than once in the output of Plan 1 for some databases
- (C) For  $x = 5000$ , Plan 1 executes faster than Plan 2 for all databases
- (D) For  $x = 9000$ , Plan 1 executes slower than Plan 2 for all databases

70. The following functional dependencies are given:

$AB \rightarrow CD, AF \rightarrow D, DE \rightarrow F, C \rightarrow G, F \rightarrow E, G \rightarrow A.$

Which one of the following options is false?

- (A)  $\{CF\}^+ = \{ACDEFG\}$
- (B)  $\{BG\}^+ = \{ABCDG\}$
- (C)  $\{AF\}^+ = \{ACDEFG\}$
- (D)  $\{AB\}^+ = \{ACDFG\}$

**Common Data for Questions 71, 72, 73**

The  $2^n$  vertices of graph G correspond to all subsets of a set of size n, for  $n \geq 6$ . Two vertices of G are adjacent if and only if the corresponding sets intersect in exactly two elements

71. The number of vertices of degree zero in G is

- (A) 1
- (B) n
- (C)  $n + 1$
- (D)  $2^n$

72. The maximum degree of a vertex in G is

- (A)  $\binom{n/2}{2} 2^{n/2}$
- (B)  $2^{n-2}$
- (C)  $2^{n-3} \times 3$
- (D)  $2^{n-1}$

73. The number of connected components in G is

- (A) n
- (B)  $n + 2$
- (C)  $2^{n/2}$

$$\frac{2^n}{n}$$

(D)  $n$ **Common Data for Questions 74, 75:**

Consider two cache organizations: The first one is 32 KB 2-way set associative with 32 - byte block size. The second one is of the same size but direct mapped. The size of an address is 32 bits in both cases A 2-to- 1 multiplexer has latency of 0.6 ns while a k-bit comparator has a latency of  $k/10$  ns. The hit latency of the set associative organization is  $h_1$  while that of the direct mapped one is  $h_2$ .

74. The value of  $h_1$  is

(A) 2.4 ns

(B) 2.3 ns

(C) 1.8 ns

(D) 1.7 ns

75. The value of  $h_2$  is

(A) 2.4 ns

(B) 2.3 ns

(C) 1.8 ns

(D) 1.7 ns

**Linked Answer Questions: Q.76 to Q.85 carry two marks each.**

A 3-ary max heap is like a binary max heap, but instead of 2 children, nodes have 3 children. A 3-ary heap can be represented by an array as follows: The root is stored in the first location,  $a[0]$ , nodes in the next level, from left to right, is stored from  $a[1]$  to  $a[3]$ . The nodes from the second level of the tree from left or right are stored from  $a[4]$  location onward. An item  $x$  can be inserted into a 3-ary heap containing  $n$  items by placing  $x$  in the location  $a[n]$  and pushing it up the tree to satisfy the heap property.

76. Which one of the following is a valid sequence of elements in an array representing 3-ary max heap?

(A) 1, 3, 5, 6, 8, 9

(B) 9, 6, 3, 1, 8, 5

(C) 9, 3, 6, 8, 5, 1

(D) 9, 5, 6, 8, 3, 1

77. Suppose the elements 7, 2, 10 and 4 are inserted in that order into the valid 3-ary max heap found in the above question, Q.76. Which one of the following is the sequence of items in the array representing the resultant heap?

(A) 10, 7, 9, 8, 3, 1, 5, 2, 6, 4

(B) 10, 9, 8, 7, 6, 5, 4, 3, 2, 1

(C) 10, 9, 4, 5, 7, 6, 8, 2, 1, 3

(D) 10, 8, 6, 9, 7, 2, 3, 4, 1, 5

**Statement for linked Answer Questions 78 and 79**

Barrier is a synchronization construct where a set of processes synchronizes globally i.e. each process in the set arrives at the barrier and waits for all others to arrive and then all processes leave the barrier. Let the number of processes in the set be three and S be a binary semaphore with the usual P and V function. Consider the following C implementation of a barrier with line numbers shown on the left.

```
Void barrier (void) {  
    1      :      P(S);  
    2      :      process_arrived++;  
    3      :      V(S);  
    4      :      while(process+arrived!=3);  
    5      :      P(S);  
    6      :      Process_left++;  
    7      :      if (process_left==3)  
    8      :      process_arrived =0;  
    9      :      process_left=0;  
    10     :      }  
    11     :      V(S);  
}
```

The variables process\_arrived and process\_left are shared among all processes and initialized to zero. In a concurrent program all three processes call the barrier function when they need to synchronize globally.

78. The above implementation of barrier is incorrect. Which one of the following is true?
- (A) The barrier implementation is wrong due to the use of binary semaphore S
  - (B) The barrier implementation may lead to a deadlock if two barrier invocations are used in immediate succession
  - (C) Lines 6 to 10 need not be inside a critical section
  - (D) The barrier implementation is correct if there are only two processes instead of three
79. Which one of the following rectifies the problem in the implementation?
- (A) Lines 6 and 10 are simply replaced by process\_arrived-
  - (B) At the beginning of the barrier the first process to enter the barrier waits until process\_arrived becomes zero before proceeding to execute P(S)
  - (C) Context switch is disabled at the beginning of the barrier and re-enabled at the end
  - (D) The variable process\_left is made private instead of shared

**Statement for Linked Answer Questions 80 and 81:**

A CPU has a 32 KB direct mapped cache with 128-byte block size.

Suppose A is a two dimensional array of size  $512 \times 512$  with elements that occupy 8-bytes each.

Consider the following two C code segments, P1 and p2

```

P1 : for (i = 0; i < 512; i++) {
      for(j = 0; j < 512; j++) {
          x += A [i][j];
      }
  }
P2 : for (i = 0; i < 512; i++) {
      for (j = 0; j < 512; j++) {
          {x += A [j][i];}
      }
  }

```

P1 and P2 are executed independently with the same initial state, namely, the array A is not in the cache and i, j, x are in registers. Let the number of

Cache misses experienced by P1 be  $M_1$  and that for P2 be  $M_2$

80. The value of  $M_1$  is

- (A) 0
- (B) 2048
- (C) 16384
- (D) 262144

81. The value of the ratio  $M_1/M_2$  is

- (A) 0
- (B) 1/16
- (C) 1/8
- (D) 16

**Statement for Linked Answer Questions 82 and 83 :**

Consider the diagram shown below where a number of LANs are connected by (transparent) bridges. In order to avoid packets looping through circuit in the graph, the bridge organize themselves in a spanning tree. First, the root bridge is identified as the bridge with the least serial number. Next, the root bridge out (one or more) data unit units to enables the setting up of the spanning tree of shortest paths from the root bridge to each bridge. Each bridge identifies a port ( the root port) through which it will forward frames to the root bridge. Port conflict are always resolve in favour of the port with the lower index value. When there is a possibility a multiple bridge forwarding to the same LAN( but not



H5, H6	1
H7, H8, H9, H10	2
H11, H12	

(C)

Hosts	Port
H1, H2, H3, H4	3
H5, H6, H9, H10	1
H7, H8, H11, H12	2

(D)

Hosts	Port
H1, H2, H3, H4	3
H5, H7, H9, H10	1
H7, H8, H11, H12	4

**Statement for Linked Answer Questions 84 and 85:**84. Which one of the following grammars generates the language  $L = \{a^i b^j \mid i \neq j\}$ ?(A)  $S \rightarrow AC \mid CB$  $C \rightarrow aCb \mid a \mid b$  $A \rightarrow aA \mid \epsilon$  $B \rightarrow Bb \mid \epsilon$ (B)  $S \rightarrow aS \mid Sb \mid a \mid b$ (C)  $S \rightarrow AC \mid CB$  $C \rightarrow aCb \mid \epsilon$  $A \rightarrow aA \mid \epsilon$  $B \rightarrow Bb \mid \epsilon$ (D)  $S \rightarrow AC \mid CB$  $C \rightarrow aCb \mid \epsilon$  $A \rightarrow aA \mid a$  $B \rightarrow bB \mid b$

85. In the correct grammar above, what is the length of the derivation (number of steps starting from S) to generate the string  $a^l b^m$  with  $l \neq m$ ?
- (A)  $\max(l, m) + 2$
  - (B)  $l + m + 2$
  - (C)  $l + m + 3$
  - (D)  $\max(l, m) + 3$

